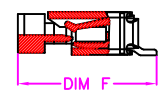
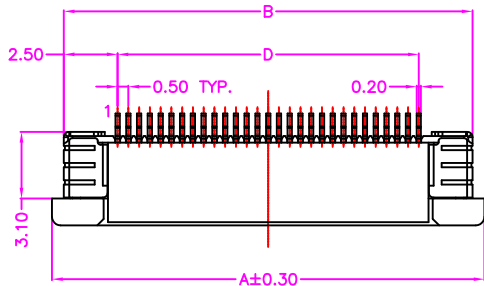
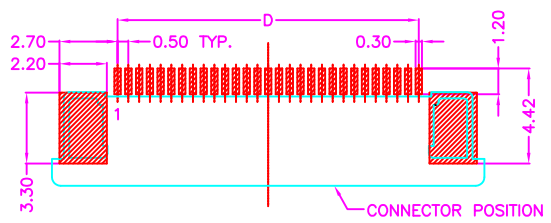
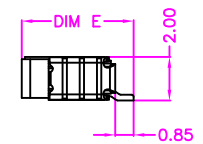
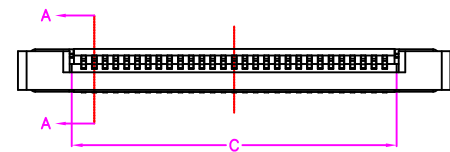


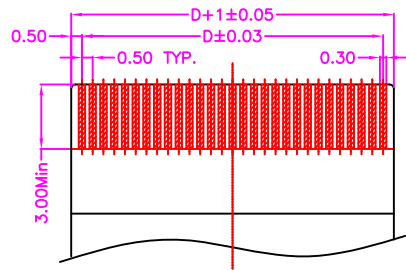
1 2 3 4 5 6 7 8



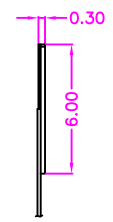
SECTION A-A SCALE 1:1



P.C.B LAYOUT TOP VIEW ±0.05



APPLICABLE FPC RECOMMENDED DIMENSION



TABLE

NO. OF POS.	Dimensions					NO. OF POS.	Dimensions				
	A	B	C	D	E		A	B	C	D	E
04	7.60	6.50	2.60	1.50		33	22.10	21.00	17.10	16.00	
05	8.10	7.00	3.10	2.00		34	22.60	21.50	17.60	16.50	5.20
06	8.60	7.50	3.60	2.50		35	23.10	22.00	18.10	17.00	
07	9.10	8.00	4.10	3.00		36	23.60	22.50	18.60	17.50	
08	9.60	8.50	4.60	3.50		37	24.10	23.00	19.10	18.00	
09	10.10	9.00	5.10	4.00		38	24.60	23.50	19.60	18.50	
10	10.60	9.50	5.60	4.50		39	25.10	24.00	20.10	19.00	
11	11.10	10.00	6.10	5.00		40	25.60	24.50	20.60	19.50	
12	11.60	10.50	6.60	5.50		41	26.10	25.00	21.10	20.00	
13	12.10	11.00	7.10	6.00		42	26.60	25.50	21.60	20.50	
14	12.60	11.50	7.60	6.50		43	27.10	26.00	22.10	21.00	
15	13.10	12.00	8.10	7.00		44	27.60	26.50	22.60	21.50	
16	13.60	12.50	8.60	7.50		45	28.10	27.00	23.10	22.00	
17	14.10	13.00	9.10	8.00		46	28.60	27.50	23.60	22.50	
18	14.60	13.50	9.60	8.50	5.20	47	29.10	28.00	24.10	23.00	6.45
19	15.10	14.00	10.10	9.00		48	29.60	28.50	24.60	23.50	
20	15.60	14.50	10.60	9.50		49	30.10	29.00	25.10	24.00	
21	16.10	15.00	11.10	10.00		50	30.60	29.50	25.60	24.50	
22	16.60	15.50	11.60	10.50		51	31.10	30.00	26.10	25.00	
23	17.10	16.00	12.10	11.00		52	31.60	30.50	26.60	25.50	
24	17.60	16.50	12.60	11.50		53	32.10	31.00	27.10	26.00	
25	18.10	17.00	13.10	12.00		54	32.60	31.50	27.60	26.50	
26	18.60	17.50	13.60	12.50		55	33.10	32.00	28.10	27.00	
27	19.10	18.00	14.10	13.00		56	33.60	32.50	28.60	27.50	
28	19.60	18.50	14.60	13.50		57	34.10	33.00	29.10	28.00	
29	20.10	19.00	15.10	14.00		58	34.60	33.50	29.60	28.50	
30	20.60	19.50	15.60	14.50		59	35.10	34.00	30.10	29.00	
31	21.10	20.00	16.10	15.00		60	35.60	34.50	30.60	29.50	
32	21.60	20.50	16.60	15.50							

MATERIALS

HOUSING: HI-TEMP. PLASTIC (UL 94V-0), BEIGE
 ACTUATOR: HI-TEMP. PLASTIC (UL 94V-0), BLACK
 SOLDER PAD: COPPER ALLOY, TIN PLATING
 TERMINAL: COPPER ALLOY

SPECIFICATION

CURRENT RATING: 0.5 AMP MAX
 DIELECTRIC WITHSTANDING: 250V AC FOR ONE MINUTE
 CONTACT RESISTANCE: 30m OHMS MAX
 INSULATION RESISTANCE: 50M OHMS MIN AT DC 250V
 OPERATION TEMPERATURE: -55°C~+85°C

PART NUMBER:
 1FPDF - 1 * * * - 1 * C

SERIES ——— TOP CONTACT ——— PACKAGE OPTION
 2: TAPE REEL
 3: TUBE

NO. OF POS. REF. TABLE ——— TERMINAL PLATED OPTION
 1: GOLD FLASH
 3: 3u" GOLD
 5: 5u" GOLD
 6: 10u" GOLD
 7: 15u" GOLD
 9: 30u" GOLD
 T: TIN

Cyberconn Technology Co., Ltd.
 www.cyberconn.com.tw Tel:+886-3-4951314

TOLERANCES	TITLE	FPC CONNECTOR SERIES				
X.X ±0.3 X.XX ±0.2 X.XXX±0.1 Angle ±5°		FPC 0.50mm PITCH, PCB MOUNT, SMT TOP CONTACT, ZIF, FEMALE, H=2.00mm				
	DRAWN BY	CHECKED BY	APPROVED BY			
	<i>Tina</i>	<i>Lion</i>	<i>Benson</i>			
UNIT	SCALE	SIZE	DRAW NO.	REV.	Sheet	
10109	MM	NONE	A4	1FPDF-012	A 1/1	

A	RELEASE	2015.2.4
REV.	DESCRIPTION	DATE

1 2 3 4 5 6 7 8