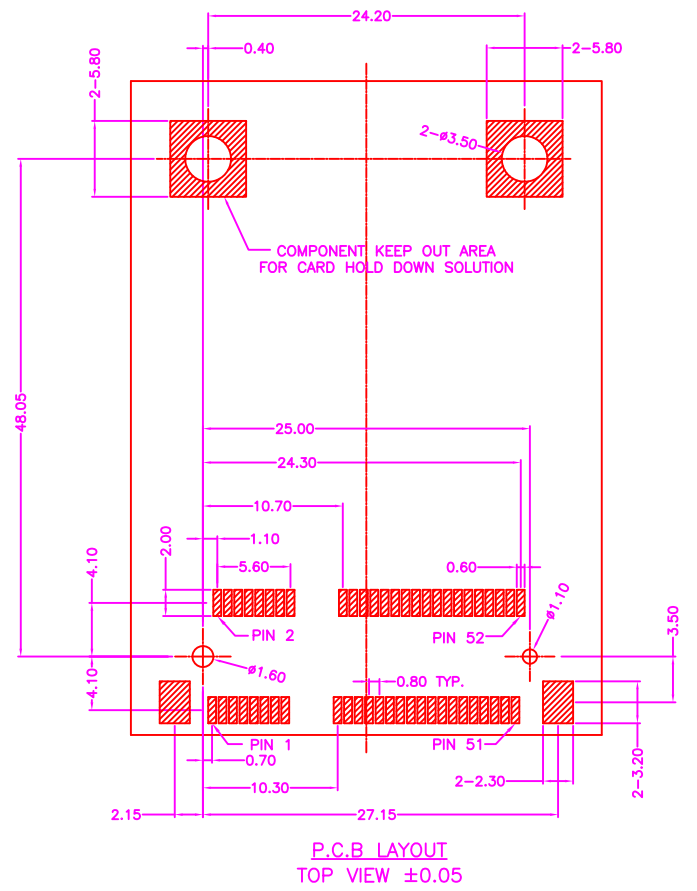
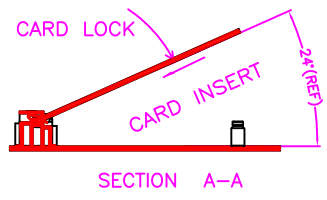
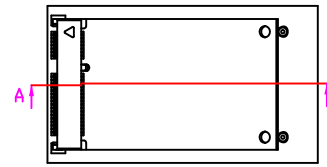
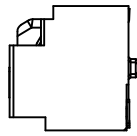
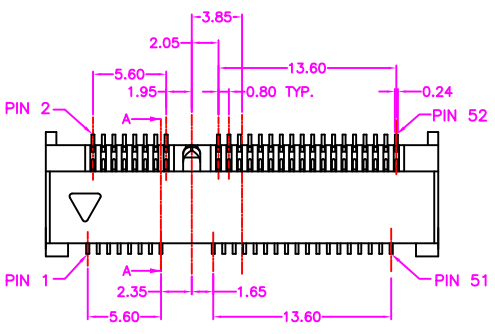
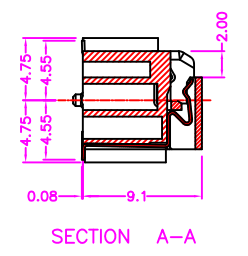


INFORMATION
 COMPATIBLE COPPER TUBE DRAWING NO:
 94CEFT-001
 COMPATIBLE SCREW DRAWING NO:
 94CEFT-003



PART NUMBER:
 4CEFT - 5 2 * - 1 2 8

SERIES NO. OF POS. TAPE REEL PACKAGE

- CONTACT PLATED OPTION
 1: GOLD FLASH
 3: 3u" GOLD
 5: 5u" GOLD
 6: 10u" GOLD
 7: 15u" GOLD
 9: 30u" GOLD

MATERIALS

HOUSING: LCP (UL 94V-0)
 SOLDER PAD: COPPER ALLOY, TIN PLATING
 TERMINAL: COPPER ALLOY, GOLD PLATED

SPECIFICATION

CURRENT RATING: 0.5 AMP MAX
 DIELECTRIC WITHSTANDING: 300V AC FOR ONE MINUTE
 CONTACT RESISTANCE: 55m OHMS MAX
 INSULATION RESISTANCE: 500M OHMS MIN AT DC 500V
 OPERATION TEMPERATURE: -40°C~+85°C

B	MODIFY HOLD DOWN SOLUTION	2014.2.17
A	RELEASE	2011.9.29
REV.	DESCRIPTION	DATE

Cyberconn Technology Co., Ltd.
 www.cyberconn.com.tw Tel:+886-3-4951314

TOLERANCES	CARD EDGE CONNECTOR SERIES				
X.X ±0.3 X.XX ±0.2 X.XXX ±0.1 Angle ±5°	TITLE	MINI PCI EXPRESS, 0.80mm PITCH, PCB MOUNT, SMT, FEMALE, 1 KEY, WITH PAD, HEIGHT=9.20mm			
	DRAWN BY	CHECKED BY	APPROVED BY		
	<i>Tina</i>	<i>Lion</i>	<i>Benson</i>		
	UNIT	SCALE	SIZE	DRAW NO.	REV. Sheet
	10022	MM NONE	A4	4CEFT-006	B 1/1