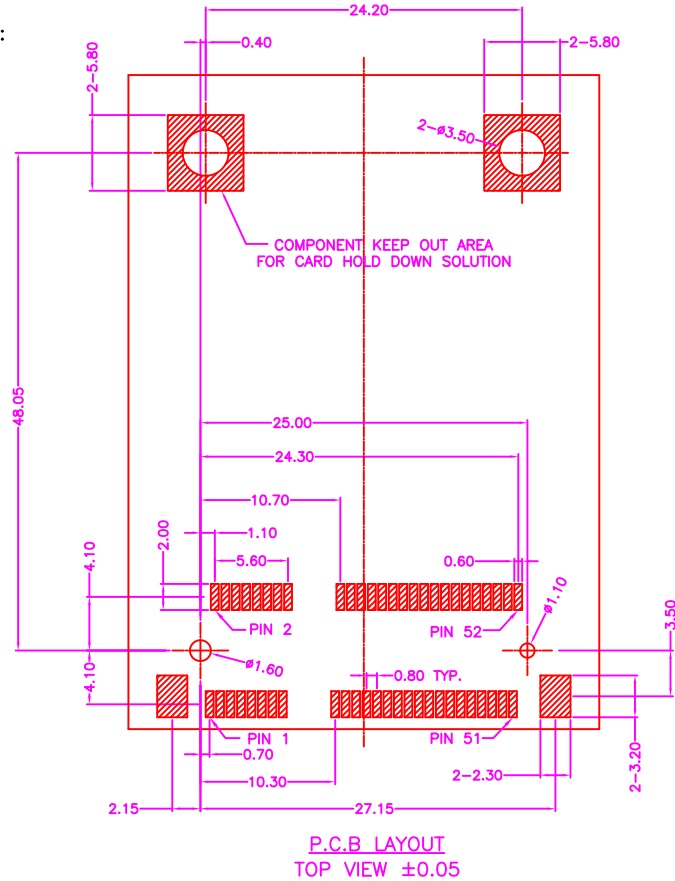
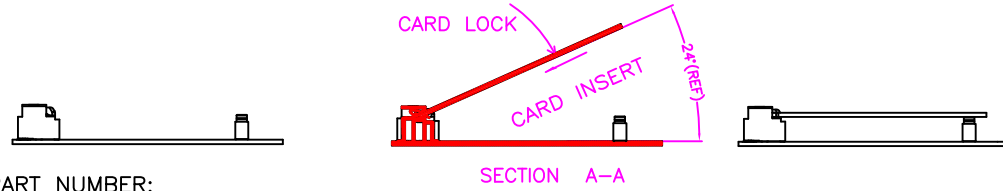
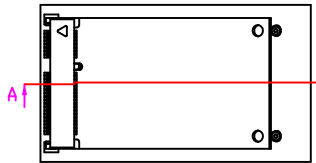
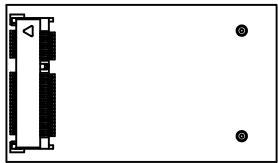
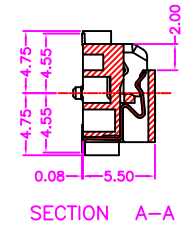
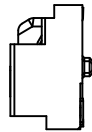
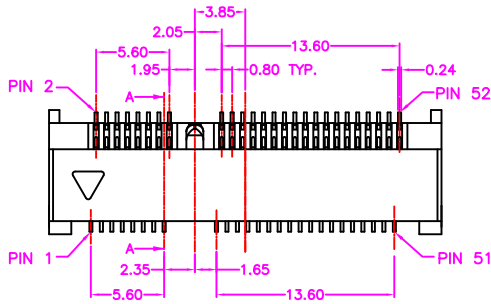
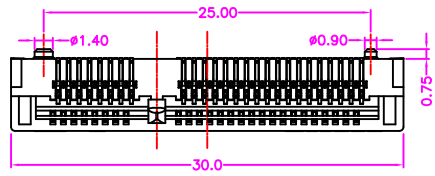


INFORMATION

COMPATIBLE COPPER TUBE DRAWING NO:  
94CEFT-001

COMPATIBLE SCREW DRAWING NO:  
94CEFT-003



PART NUMBER:

4CEFT - 5 2 \* - 1 2 A

SERIES NO. OF POS. TAPE REEL PACKAGE

CONTACT PLATED OPTION

- 1: GOLD FLASH
- 3: 3u" GOLD
- 5: 5u" GOLD
- 6: 10u" GOLD
- 7: 15u" GOLD
- 9: 30u" GOLD

MATERIALS

HOUSING: LCP (UL 94V-0)  
SOLDER PAD: COPPER ALLOY, TIN PLATING  
TERMINAL: COPPER ALLOY, GOLD PLATED

SPECIFICATION

CURRENT RATING: 0.5 AMP MAX  
DIELECTRIC WITHSTANDING: 300V AC FOR ONE MINUTE  
CONTACT RESISTANCE: 55m OHMS MAX  
INSULATION RESISTANCE: 500M OHMS MIN AT DC 500V  
OPERATION TEMPERATURE: -40°C~+85°C

B	MODIFY HOLD DOWN SOLUTION	2014.2.17
A	RELEASE	2011.9.29
REV.	DESCRIPTION	DATE
	MODIFY HOLD DOWN SOLUTION	

**Cyberconn Technology Co., Ltd.**  
www.cyberconn.com.tw Tel:+886-3-4951314

TOLERANCES	CARD EDGE CONNECTOR SERIES				
X.X ±0.3	TITLE				
X.XX ±0.2	MINI PCI EXPRESS, 0.80mm PITCH, PCB MOUNT, SMT, FEMALE, 1 KEY, WITH PAD, HEIGHT=5.60mm				
X.XXX ±0.1	DRAWN BY	CHECKED BY	APPROVED BY		
Angle ±5°	Janice	Lion	Benson		
	UNIT	SCALE	SIZE	DRAW NO.	REV.
	10022	MM	NONE	A4	4CEFT-008
					Sheet
					1/1