

PART NUMBER:

021BC - 0 * N - 1 1 *

SERIES

LOGO OPTION

BLANK: W/O LOGO

L: WITH "CTC" LOGO

TRAY PACKAGE

CONNECTOR TERMINAL CONTACT PLATING OPTION

1: GOLD FLASH

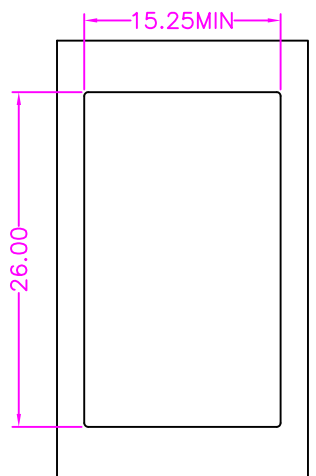
3: 3u" GOLD

7: 15u" GOLD

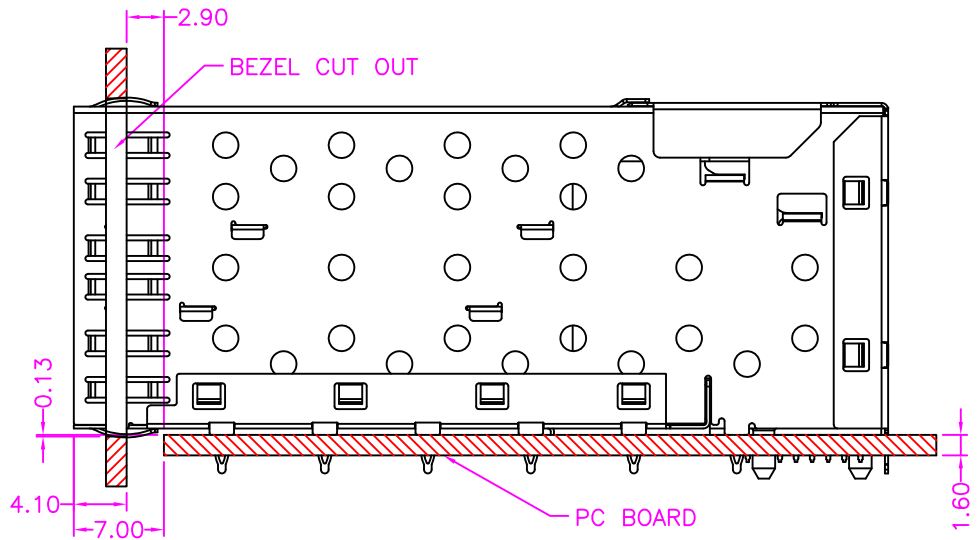
| | | |
|------|-----------------|-----------|
| B | ADD LOGO OPTION | 2012.4.17 |
| A | RELEASE | 2011.7.15 |
| REV. | DESCRIPTION | DATE |

Cyberconn Technology Co., Ltd.
www.cyberconn.com.tw Tel: +886-3-4951314

| | | | | | | | |
|------------|------|--|-------------|---------------|----------|-----------|-------|
| TOLERANCES | | TITLE SFP SERIES | | | | | |
| X.X | ±0.3 | SFP 2x1 CAGE, R/A, METAL SHIELD, PRESS FIT TYPE WITH CONNECTOR | | | | | |
| X.XX | ±0.2 | | | | | | |
| X.XXX | ±0.1 | | | | | | |
| Angle ±5° | | DRAWN BY | CHECKED BY | APPROVED BY | | | |
| | | <i>Janice</i> | <i>Lion</i> | <i>Benson</i> | | | |
| | | UNIT | SCALE | SIZE | DRAW NO. | REV. | Sheet |
| | | 10001 | MM | NONE | A4 | 021BC-002 | B 1/3 |



BEZEL CUT-OUT CENTER SPACING DETAIL
BEZEL THICKNESS:0.8-2.6



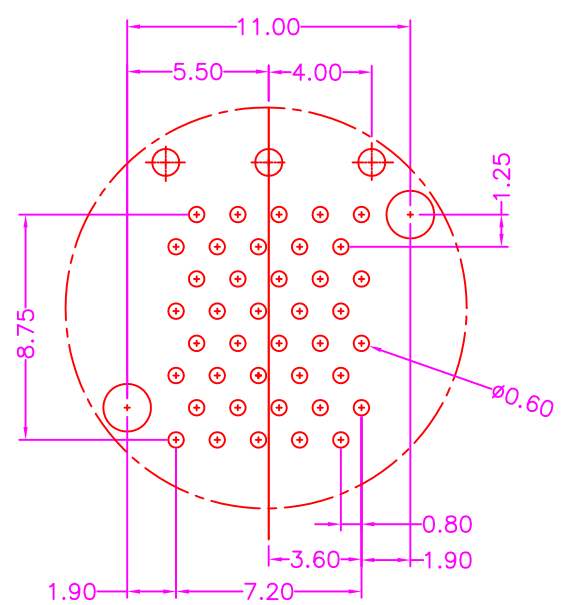
MATERIALS

SFP CONNECTOR
 HOUSING: LCP (UL 94V-0), BLACK
 TERMINAL: COPPER ALLOY, GOLD PLATED ON CONTACT AREA
 TIN PLATING ON SOLDER TAIL

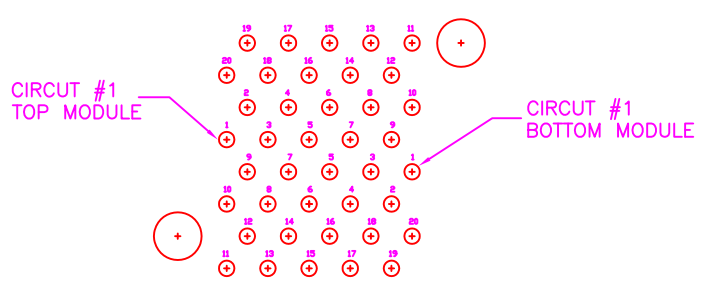
SFP CAGE
 METAL SHIELD:
 TOP: COPPER ALLOY, NICKEL PLATING
 MIDDLE: SUS, NICKEL PLATING
 BOTTOM: COPPER ALLOY, NICKEL PLATING
 BACK: COPPER ALLOY, NICKEL PLATING

| | | |
|------|-----------------|-----------|
| B | ADD LOGO OPTION | 2012.4.17 |
| A | RELEASE | 2011.7.15 |
| REV. | DESCRIPTION | DATE |

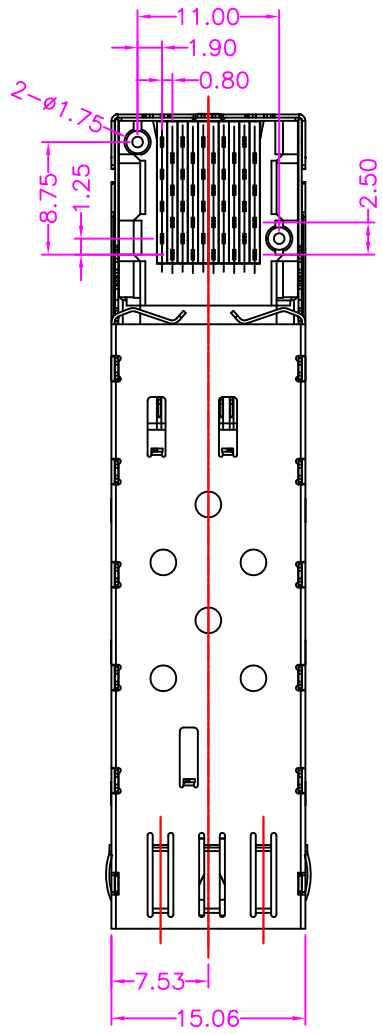
| | | | | | | |
|---|--|--|-------|-------------|----------------|---------------|
| Cyberconn Technology Co., Ltd. <small>www.cyberconn.com.tw Tel:+886-3-4951314</small> | | | | | | |
| TOLERANCES | | SFP SERIES | | | | |
| X.X ±0.3 | | TITLE SFP 2x1 CAGE, R/A, METAL SHIELD, PRESS FIT TYPE WITH CONNECTOR | | | | |
| X.XX ±0.2 | | DRAWN BY | | CHECKED BY | | APPROVED BY |
| X.XXX ±0.1 | | <i>Janice</i> | | <i>Lion</i> | | <i>Benson</i> |
| Angle ±5° | | UNIT | SCALE | SIZE | DRAW NO. | REV. Sheet |
| | | 10001 | MM | NONE | A4 021BC-002-1 | B 2/3 |



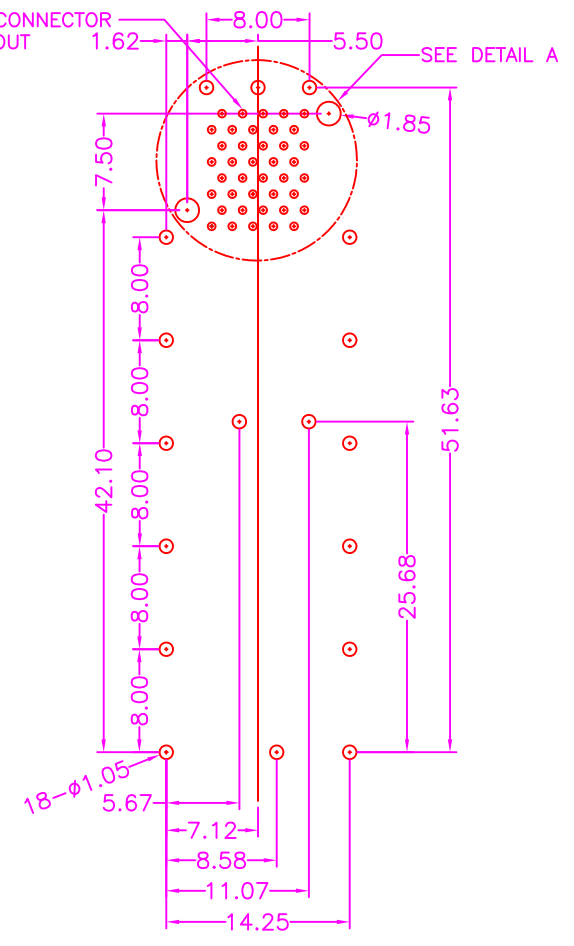
DEATIL A
SCALE 2:1



CONNECTOR PIN-OUT
COMPONENT SIDE OF BOARD



SEE CONNECTOR
PIN-OUT



P.C.B. LAYOUT
TOP VIEW ± 0.05

| | | |
|------|-----------------|-----------|
| B | ADD LOGO OPTION | 2012.4.17 |
| A | RELEASE | 2011.7.15 |
| REV. | DESCRIPTION | DATE |

Cyberconn Technology Co., Ltd.
www.cyberconn.com.tw Tel:+886-3-4951314

| | | | | | | |
|---|------------|--|------|-------------|------|-------|
| TOLERANCES | SFP SERIES | | | | | |
| X.X ± 0.3 X.XX ± 0.2 X.XXX ± 0.1 Angle $\pm 5^\circ$ | TITLE | SFP 2x1 CAGE, R/A, METAL SHIELD, PRESS FIT TYPE WITH CONNECTOR | | | | |
| | DRAWN BY | CHECKED BY | | APPROVED BY | | |
| | Janice | Lion | | Benson | | |
| 10001 | UNIT | SCALE | SIZE | DRAW NO. | REV. | Sheet |
| | MM | NONE | A4 | 021BC-002-2 | B | 3/3 |