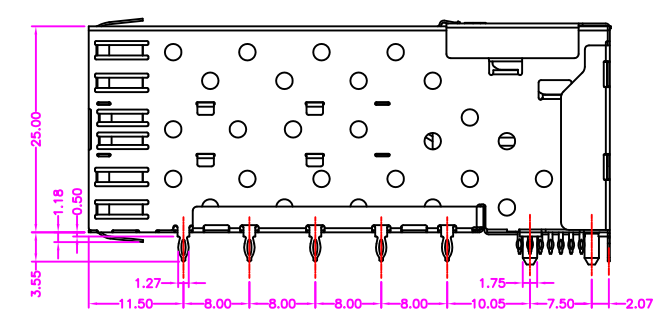
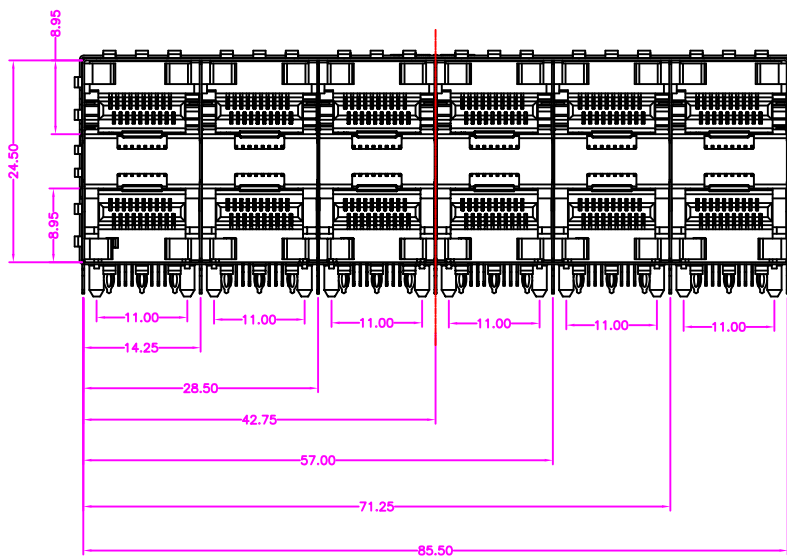


PART NUMBER:
026BC - 0 * N - 1 0

SERIES ——— TRAY PACKAGE

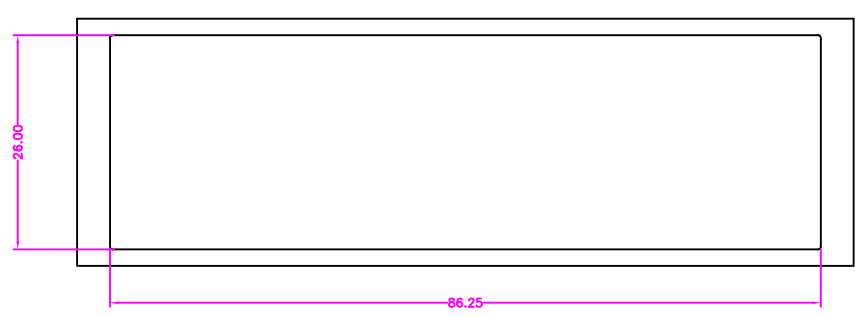
CONNECTOR TERMINAL PLATING OPTION
 1: GOLD FLASH
 7: 15u" GOLD



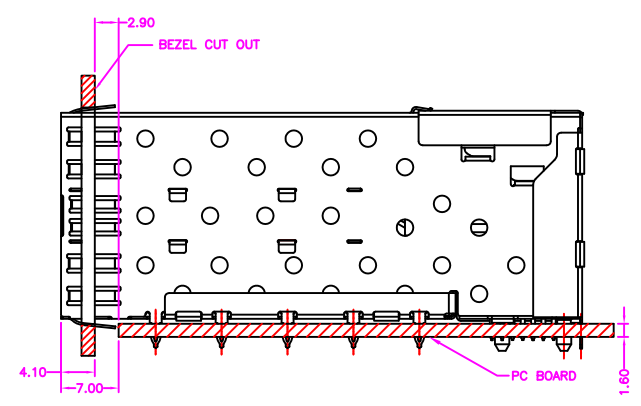
| | | |
|------|-------------|-----------|
| A | RELEASE | 2011.7.21 |
| REV. | DESCRIPTION | DATE |

Cyberconn Technology Co., Ltd.
 www.cyberconn.com.tw Tel:+886-3-4951314

| | | | | | | |
|------------|--|-------|-------------|----------|---------------|-------|
| TOLERANCES | SFP SERIES | | | | | |
| X.X ±0.3 | TITLE SFP 2x6 CAGE, R/A, METAL SHIELD, PRESS FIT TYPE WITH CONNECTOR | | | | | |
| X.XX ±0.2 | DRAWN BY | | CHECKED BY | | APPROVED BY | |
| X.XXX ±0.1 | <i>Janice</i> | | <i>Lion</i> | | <i>Benson</i> | |
| Angle ±5° | UNIT | SCALE | SIZE | DRAW NO. | REV. | Sheet |
| | 10001 | MM | NONE | A4 | 026BC-001 | A 1/1 |



BEZEL CUT-OUT CENTER SPACING DETAIL
BEZEL THICKNESS:0.8-2.6



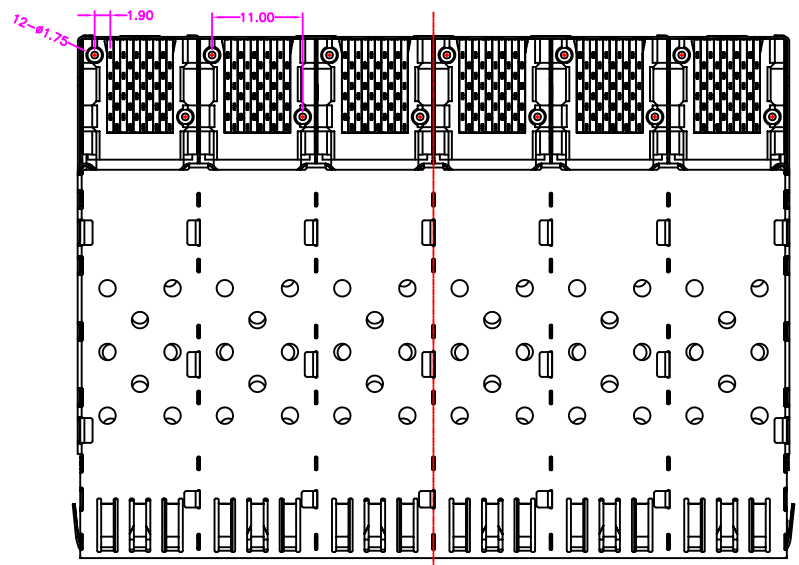
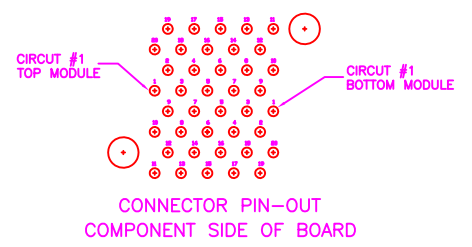
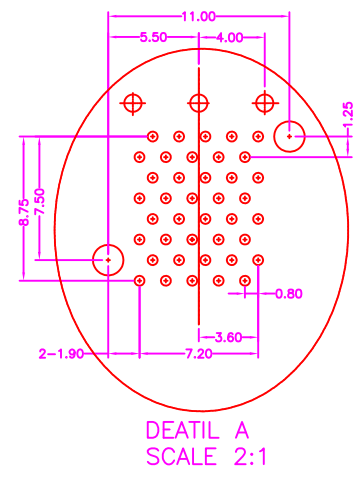
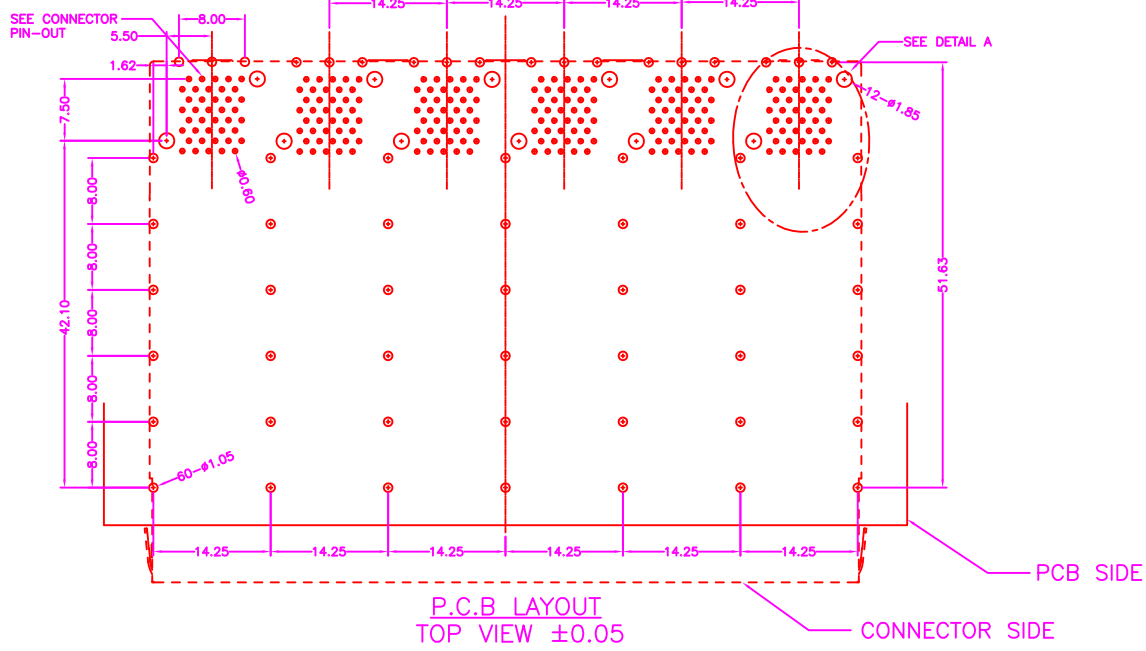
MATERIALS

- SFP CONNECTOR
- HOUSING: LCP (UL 94V-0), BLACK
- TERMINAL: COPPER ALLOY, GOLD PLATED ON CONTACT AREA
TIN PLATING ON SOLDER TAIL
- SFP CAGE
- METAL SHIELD: COPPER ALLOY, NICKEL PLATING

Cyberconn Technology Co., Ltd.
www.cyberconn.com.tw Tel:+886-3-4951314

| | | | | | | | |
|------------|------|---------------|--|---------------|----------|-------------|-------|
| TOLERANCES | | SFP SERIES | | | | | |
| X.X | ±0.3 | TITLE | SFP 2x6 CAGE, R/A, METAL SHIELD, PRESS FIT TYPE WITH CONNECTOR | | | | |
| X.XX | ±0.2 | DRAWN BY | CHECKED BY | APPROVED BY | | | |
| X.XXX | ±0.1 | <i>Janice</i> | <i>Lion</i> | <i>Benson</i> | | | |
| Angle | ±5° | UNIT | SCALE | SIZE | DRAW NO. | REV. | Sheet |
| | | 10001 | MM | NONE | A4 | 026BC-001-1 | A 1/1 |

| | | |
|------|-------------|-----------|
| A | RELEASE | 2011.7.21 |
| REV. | DESCRIPTION | DATE |



| | | |
|------|-------------|-----------|
| A | RELEASE | 2011.7.21 |
| REV. | DESCRIPTION | DATE |

Cyberconn Technology Co., Ltd.
www.cyberconn.com.tw Tel:+886-3-4951314

| | | | | | | |
|------------|--|-------|------------|----------|-------------|-------|
| TOLERANCES | SFP SERIES | | | | | |
| X.X ±0.3 | TITLE SFP 2x6 CAGE, R/A, METAL SHIELD, PRESS FIT TYPE WITH CONNECTOR | | | | | |
| X.XX ±0.2 | DRAWN BY | | CHECKED BY | | APPROVED BY | |
| X.XXX ±0.1 | Janice | | Lion | | Benson | |
| Angle ±5° | UNIT | SCALE | SIZE | DRAW NO. | REV. | Sheet |
| | 10001 | MM | NONE | A4 | 026BC-001-2 | A 1/1 |